

**SPECIFICATION
FOR
LCD Module
KD050C-1A-CTP**

MODULE:	KD050C-1A-CTP
CUSTOMER:	

REV	DESCRIPTION	DATE
1.0	FIRST ISSUE	2013.06.08

STARTEK	INITIAL	DATE
PREPARED BY		
CHECKED BY		
APPROVED BY		

CUSTOMER	INITIAL	DATE
APPROVED BY		

Contents

General Description	-----	4
1. Block Diagram	-----	5
2. Outline dimension	-----	6
3. Input Terminal Pin Assignment	-----	9
4. LCD Optical Characteristics	-----	11
5. Electrical Characteristics	-----	14
6. AC Characteristic	-----	15
7. LCD Module Out-Going Quality Level	-----	17
8. Reliability Test Result	-----	25
9. Cautions and Handling Precautions	-----	26
10. Packing	-----	27

General Description

* Description

This is a color active matrix TFT (Thin Film Transistor) LCD (liquid crystal display) that uses amorphous silicon TFT as a switching device. This model is composed of a Transmissive type TFT-LCD Panel, driver circuit, back-light unit. The resolution of a 5.0TFT-LCD contains 800x480 pixels, and can display up to 65K/262K/16.7M colors.

* Features

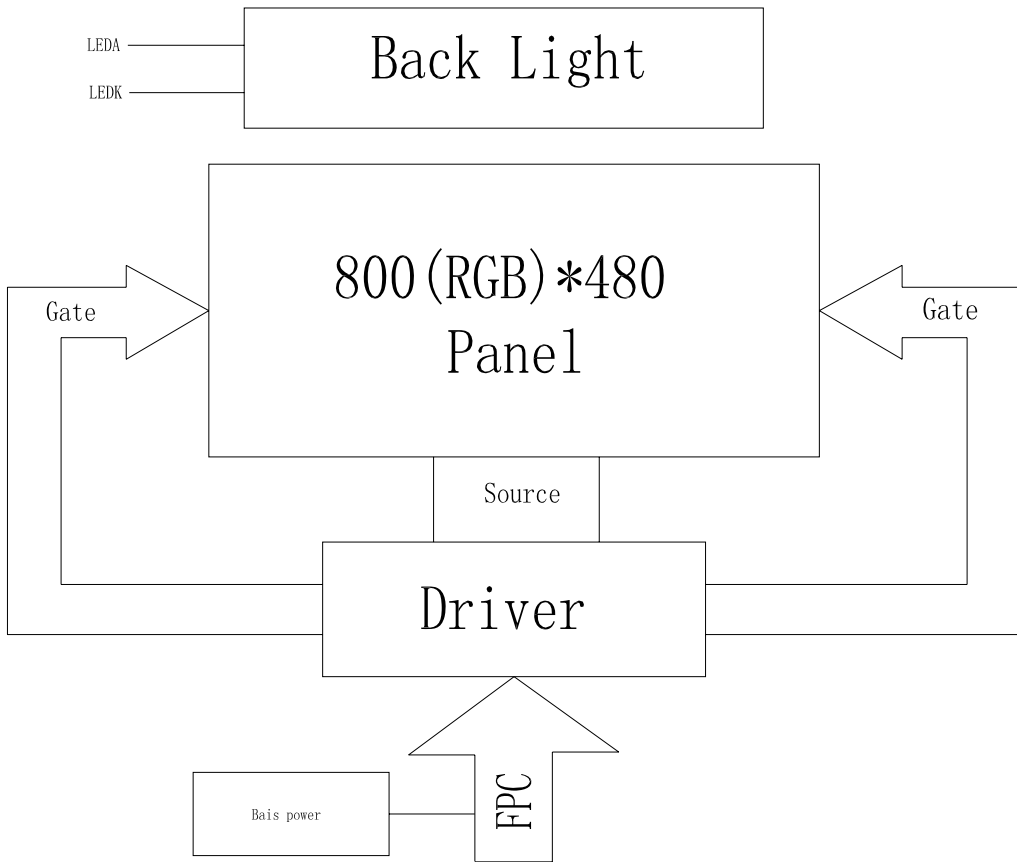
- Low Input Voltage: 3.3V(TYP)
- Display Colors of TFT LCD: 65K/262K/16.7M colors
- Interface: 16/18/24 bit RGB

General Information Items	Specification	Unit	Note
	Main Panel		
Display area(AA)	108.00(H)*64.80 (V) (5.0inch)	mm	-
Driver element	TFT active matrix	-	-
Display colors	65K/262K/16.7M	colors	-
Number of pixels	800(RGB)*480	dots	-
Pixel arrangement	RGB vertical stripe	-	-
Pixel pitch	0.108(H)*0.108(V)	mm	-
Viewing angle	12:00	o'clock	-
Controller IC	ILI5960/ILI6122	-	-
Display mode	Transmissive/ Normally White	-	-
Operating temperature	-20~+70	°C	-
Storage temperature	-30~+80	°C	-

* Mechanical Information

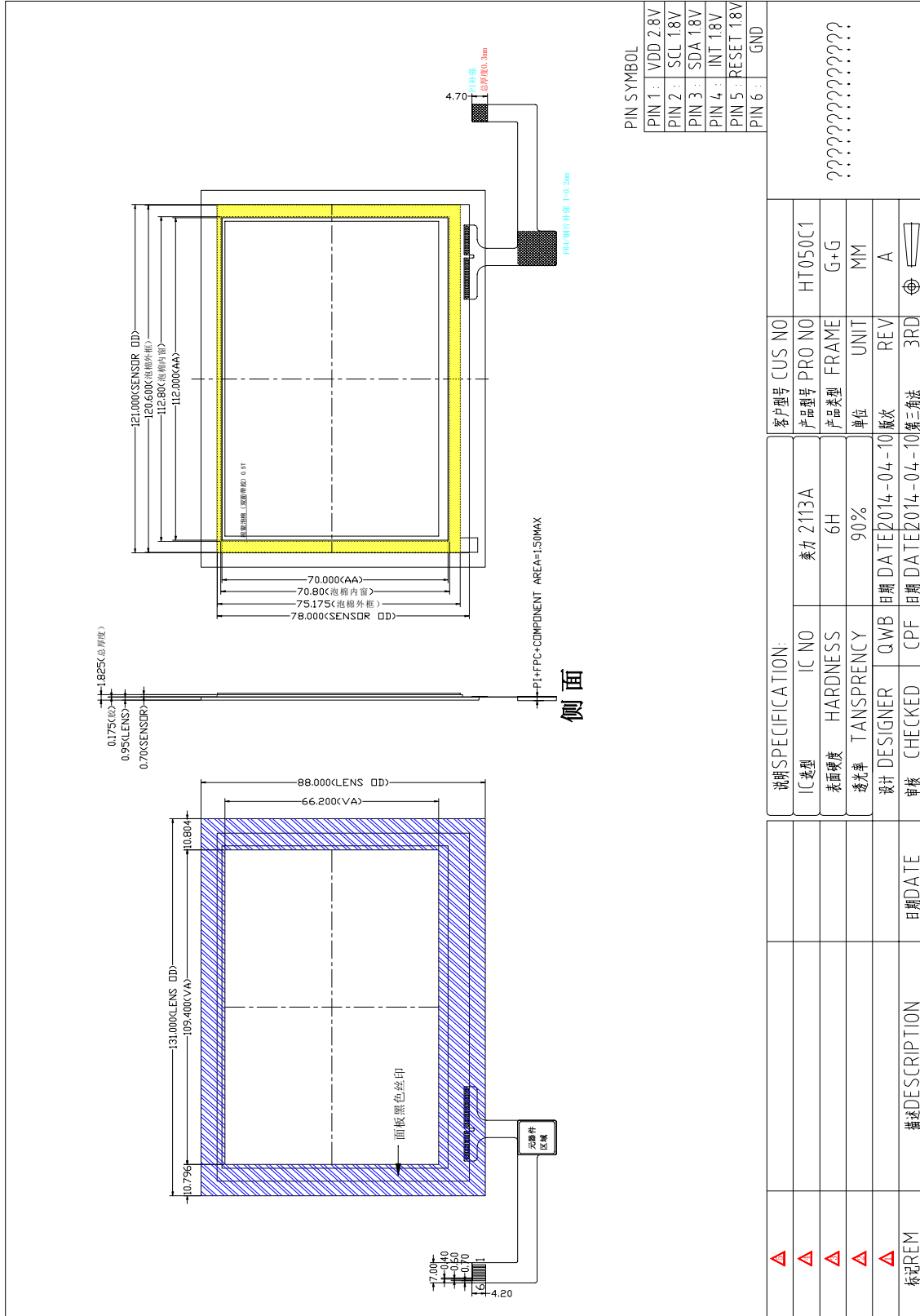
Item		Min.	Typ.	Max.	Unit	Note
Module size	Horizontal(H)		120.70		mm	-
	Vertical(V)		75.80		mm	-
	Depth(D)		3.1		mm	-
Weight			TBD		g	-

1. Block Diagram

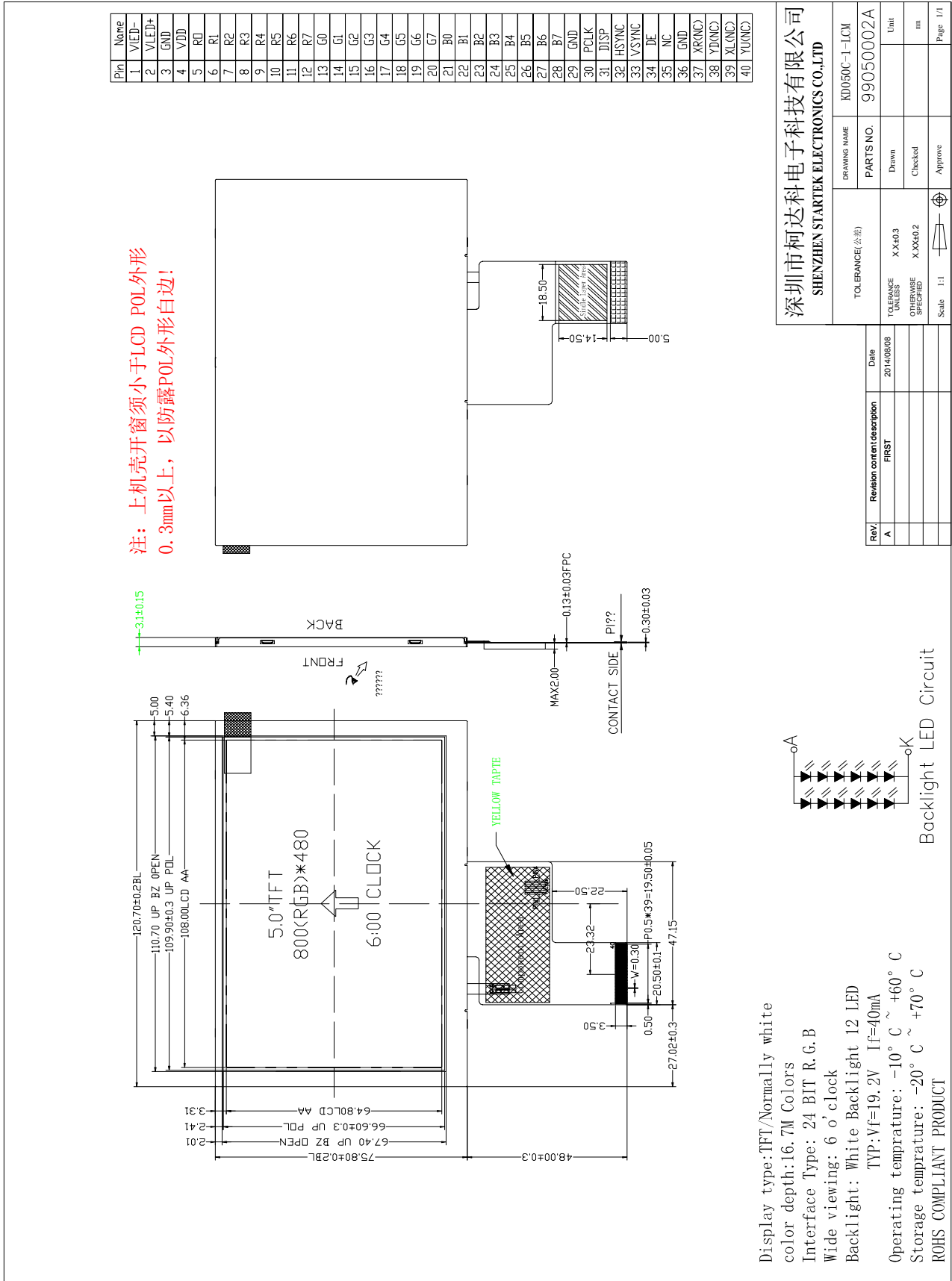


2. Outline dimension

2.1 CTP DRAWING



2.2 LCM DRAWING



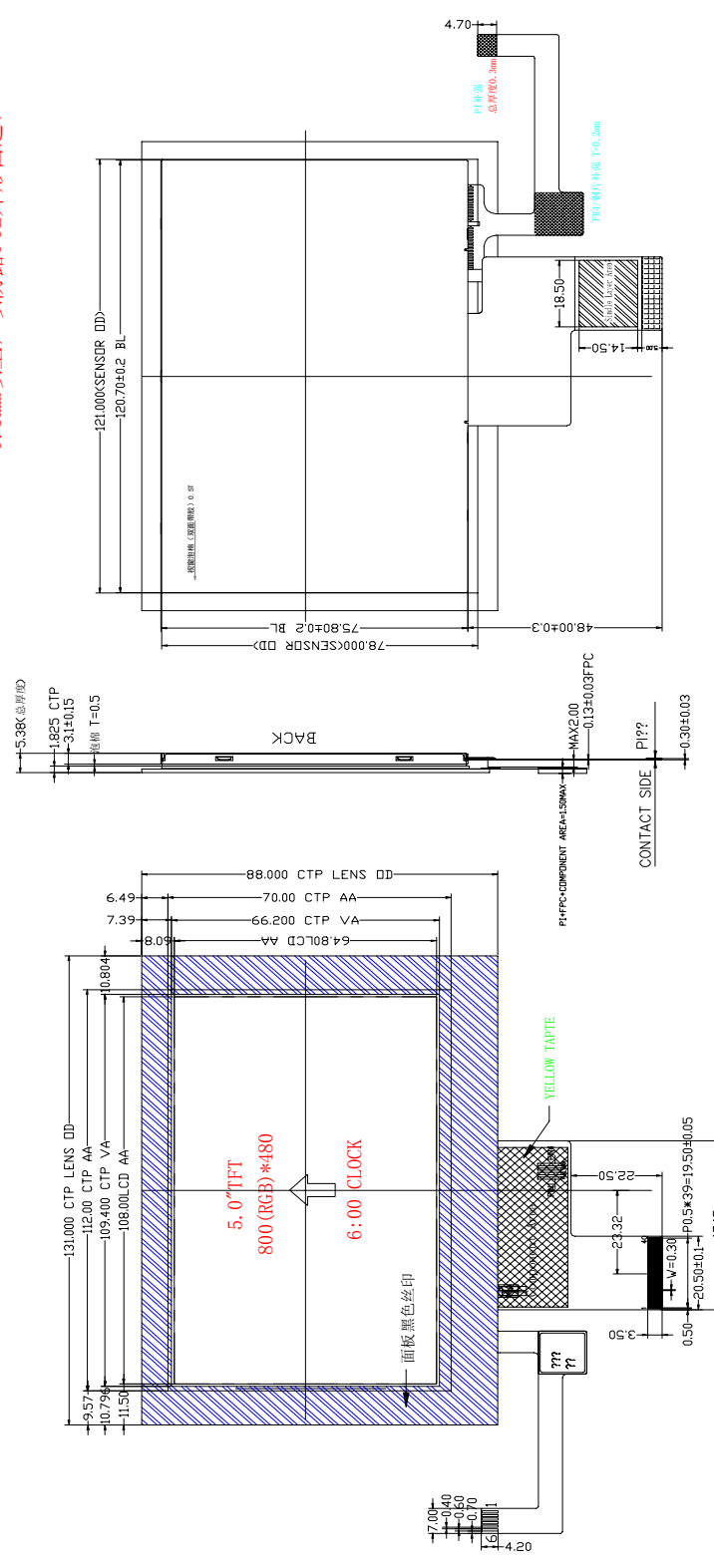
DRAWING NAME		KD050C-1-LCM	
PARTS NO.		99050002A	
Drawn	Checked	Unit	mm
TOLERANCE (公差)		X.XX±0.3	
TOLERANCE UNLESS OTHERWISE SPECIFIED		X.XX±0.2	
Scale	1:1	Approve	

Rev	Revision content description	Date
A	FIRST	2014/09/08

深圳市柯达科电子科技有限公司
SHENZHEN STARTEK ELECTRONICS CO.,LTD

2.3 LCM-CTP

注：上机壳开窗须小于LCD POL外形
0.3mm以上，以防露POL外形白边！



5.0" TFT
800 (RGB) *480
6:00 CLOCK

YELLOW TAPPE

面框黑色丝印

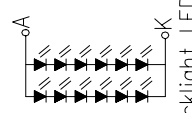
CTP PIN SYMBOL

PIN 1:	VDD 2.8V
PIN 2:	SCL 1.8V
PIN 3:	SDA 1.8V
PIN 4:	INT 1.8V
PIN 5:	RESET 1.8V
PIN 6:	GND

深圳市柯达电子科技有限公司
SHENZHEN STARTEK ELECTRONICS CO.,LTD

DRAWING NAME		KD050C-1-LCM-CTP	
PARTS NO.		99050002A	
TOLERANCE (公称)		X.Xd0.3	
TOLERANCE UNLESS OTHERWISE SPECIFIED		X.Xd0.2	
Scale		1:1	
Date		2014/08/08	
Revision content description		FIRST	
Rev/		Drawn	
A		Checked	
		Approve	

Backlight LED Circuit



Display type: TFT/Normally white
color depth: 16.7M Colors
Interface Type: 24 BIT R.G.B
Wide viewing: 6 o'clock
Backlight: White Backlight 12 LED
TYP: Vf=19.2V If=40mA
Operating temperature: -10° C ~ +60° C
Storage temperature: -20° C ~ +70° C
ROHS COMPLIANT PRODUCT

Pin	None
1	V(IE)-
2	V(LED)-
3	GND
4	V(DD)
5	RD
6	R1
7	R2
8	R3
9	R4
10	R5
11	R6
12	R7
13	G0
14	G1
15	G2
16	G3
17	G4
18	G5
19	G6
20	G7
21	B0
22	B1
23	B2
24	B3
25	B4
26	B5
27	B6
28	B7
29	GND
30	PCLK
31	DISP
32	HSTMC
33	VSINC
34	DE
35	NC
36	GND
37	X(RND)
38	Y(RND)
39	X(LNC)
40	Y(LNC)

3. Input terminal Pin Assignment

NO.	SYMBOL	DISCRIPTION	I/O
1	VLED-	Cathode pin OF backlight	P
2	VLED+	Anode pin of backlight	P
3	GND	Ground.	P
4	VDD	Supply voltage(3.3V).	P
5	R0	Red data input.	I/O
6	R1	Red data input.	I/O
7	R2	Red data input.	I/O
8	R3	Red data input.	I/O
9	R4	Red data input.	I/O
10	R5	Red data input.	I/O
11	R6	Red data input.	I/O
12	R8	Red data input.	I/O
13	G0	Green data input.	I/O
14	G1	Green data input.	I/O
15	G2	Green data input.	I/O
16	G3	Green data input.	I/O
17	G4	Green data input.	I/O
18	G5	Green data input.	I/O
19	G6	Green data input.	I/O
20	G7	Green data input.	I/O
21	B0	Blue data input.	I/O
22	B1	Blue data input.	I/O
23	B2	Blue data input.	I/O
24	B3	Blue data input.	I/O
25	B4	Blue data input.	I/O
26	B5	Blue data input.	I/O

27	B6	Blue data input.	I/O
28	B7	Blue data input.	I/O
29	GND	Ground.	P
30	PCLK	Dot clock signal for RGB interface operation Fix this pin at VCI or GND when not in use.	I
31	DISP	Standby setting for testing, it should be connected to VDDIO in normal operation mode. If connected to GND, the IC is in standby mode.	I
32	HSYNC	Line synchronizing signal for RGB interface operation. fix this pin at VCI or GND when not in use	I
33	VSYNC	Frame synchronizing signal for RGB interface operation. fix this pin at VCI or GND when not in use.	I
34	DE	Data enable signal for RGB interface operation. fix this pin at VCI or GND when not in use.	I
35	NC	NC	
36	GND	Ground.	P
37	XR(NC)	Touch panel Right Glass Terminal	A/D
38	YD(NC)	Touch panel Bottom Film Terminal	A/D
39	XL(NC)	Touch panel LIFT Glass Terminal	A/D
40	YU(NC)	Touch panel Top Film Terminal	A/D

4. LCD Optical Characteristics

4.1 Optical specification

Item		Symbol	Condition	Min.	Typ.	Max.	Unit	Note
Transmittance (with Polarizer)		T (%)	θ=0 Normal viewing angle	—	4.29	—	—	
Transmittance (without Polarizer)		T(%)		—	12.16	—	—	
Contrast		CR		560	700	—		(1)(2)
Response time	Rising	T _R		—	4	8	msec	(1)(3)
	Falling	T _F		—	12	24		
Color gamut		S(%)		—	62	—	%	
Color chromaticity (CIE1931)	White	W _x		0.283	0.303	0.323	(1)(4) CF glass	
		W _y		0.305	0.325	0.345		
	Red	R _x		0.606	0.626	0.646		
		R _y		0.314	0.334	0.354		
	Green	G _x	0.257	0.277	0.297			
		G _y	0.529	0.549	0.569			
	Blue	B _x	0.122	0.142	0.162			
		B _y	0.102	0.122	0.142			
Viewing angle	Hor.	θ _L	CR>10	60	70	—	(1)(4) Viewing Angle base on using EWV Polarizer · Reference Only	
		θ _R		60	70	—		
	Ver.	θ _U		60	70	—		
		θ _D		40	60	—		
Optima View Direction		12 O'clock					(5)	

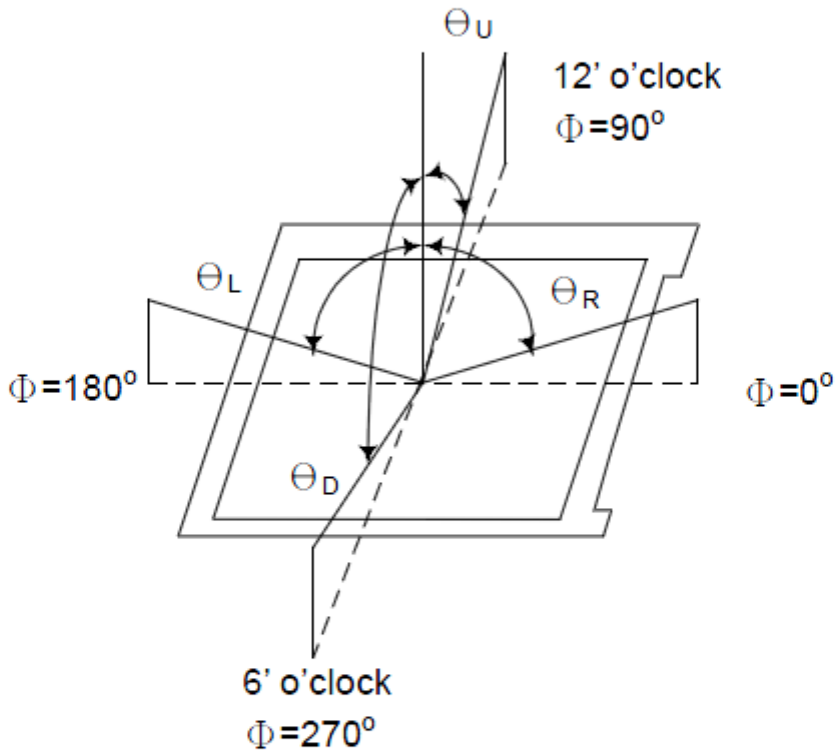
4.2 Measuring Condition

- Measuring surrounding : dark room
- Ambient temperature : 25±2°C
- 15min. warm-up time.

4.3 Measuring Equipment

- FPM520 of Westar Display technologies, INC., which utilized SR-3 for Chromaticity and BM-5A for other optical characteristics.

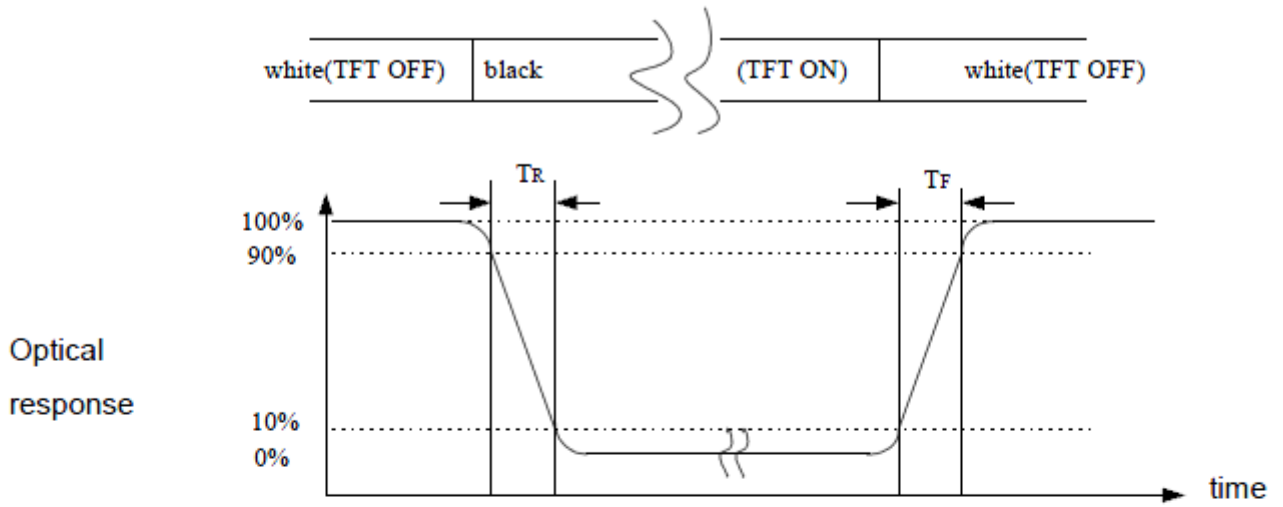
Note (1) Definition of Viewing Angle:



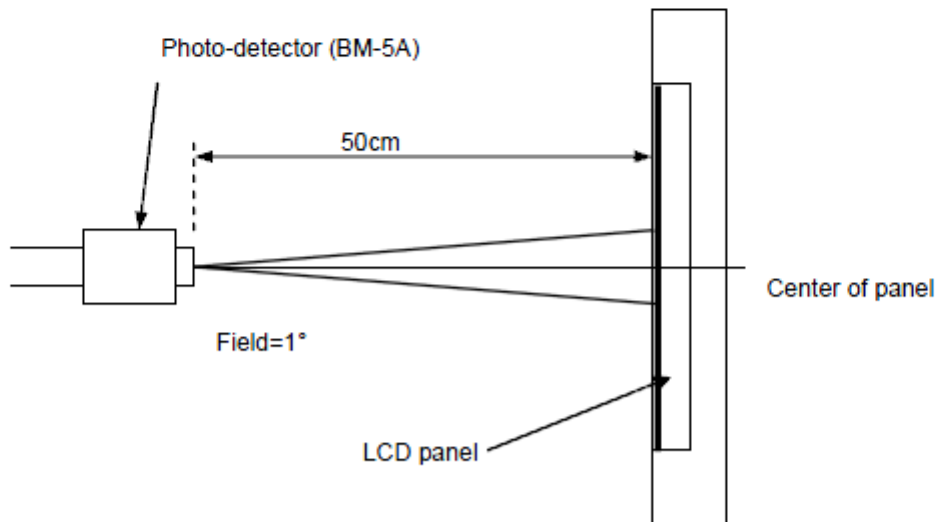
Note (2) Definition of Contrast Ratio (CR) :
measured at the center point of panel

$$CR = \frac{\text{Luminance with all pixels white}}{\text{Luminance with all pixels black}}$$

Note (3) Definition of Response Time : Sum of T_R and T_F



Note (4) Definition of optical measurement setup



5. Electrical Characteristics

5.1 Absolute Maximum Rating (Ta=25 VSS=0V)

Characteristics	Symbol	Min.	Max.	Unit
Digital Supply Voltage	VDD	-0.5	5.0	V
Digital interface supply Voltage	VDDIO	-0.5	VDD+0.3	V
Operating temperature	T _{OP}	-20	+70	°C
Storage temperature	T _{ST}	-30	+80	°C

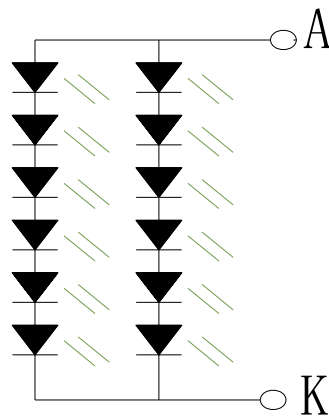
5.2 DC Electrical Characteristics

Characteristics	Symbol	Min.	Typ.	Max.	Unit	Note
Digital Supply Voltage	VDD	3.0	3.3	4.2	V	
Digital interface supply Voltage	VDDIO	3.0	3.3	4.2	V	
Normal mode Current consumption	IDD	--	200	--	mA	
Level input voltage	V _{IH}	0.7VDDIO		VDDIO	V	
	V _{IL}	GND		0.3VDDIO	V	
Level output voltage	V _{OH}	0.8VDDIO		VDDIO	V	
	V _{OL}	GND		0.2VDDIO	V	

5.3 LED Backlight Characteristics

The back-light system is edge-lighting type with 12chips White LED

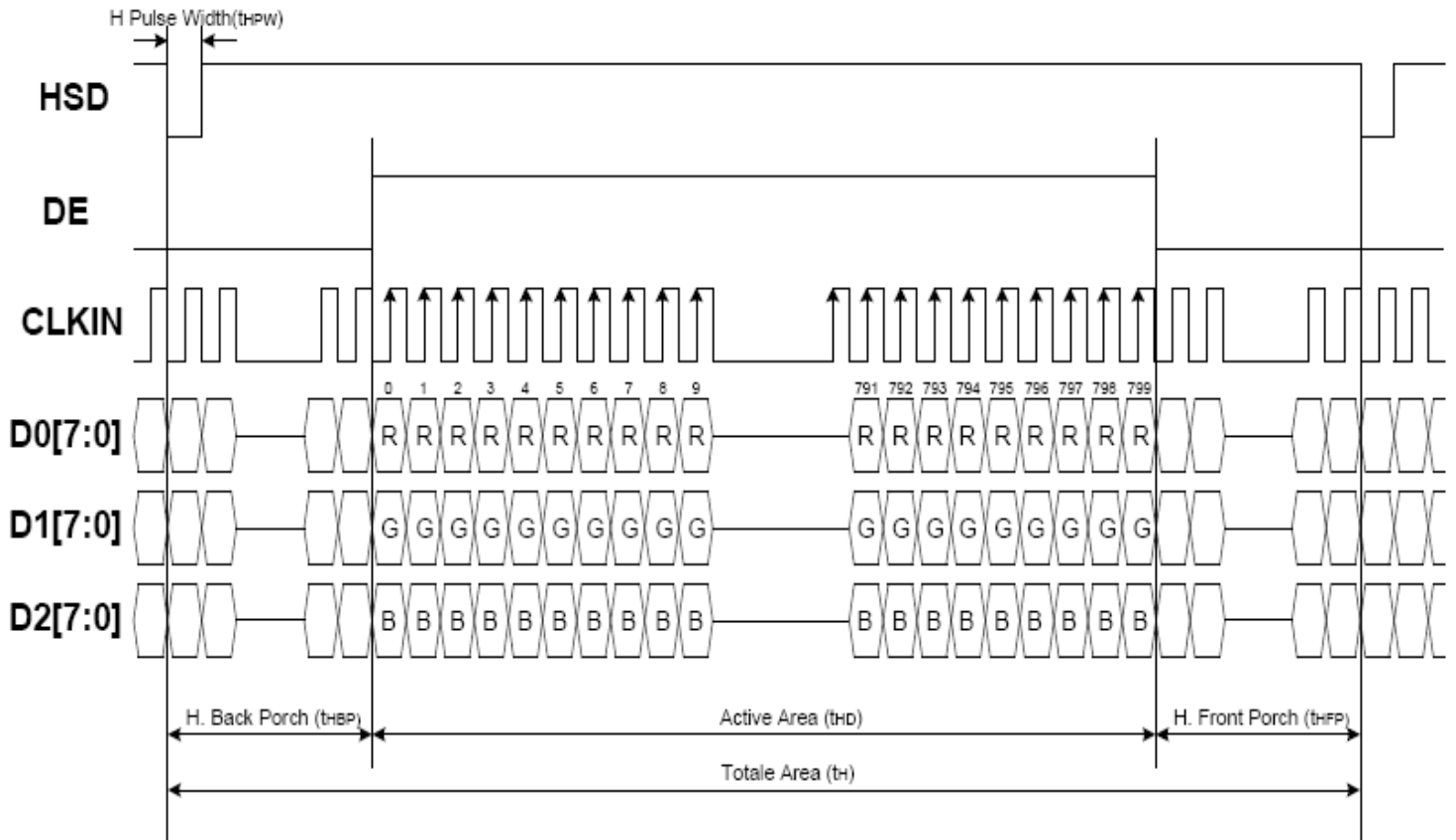
Item	Symbol	Min.	Typ.	Max.	Unit	Note
Forward Current	I _F	30	40	--	mA	
Forward Voltage	V _F	--	19.2	--	V	
LCM Luminance	L _V	350	--	--	cd/m ²	I _F =40mA
Uniformity	AVg	80	--	--	%	



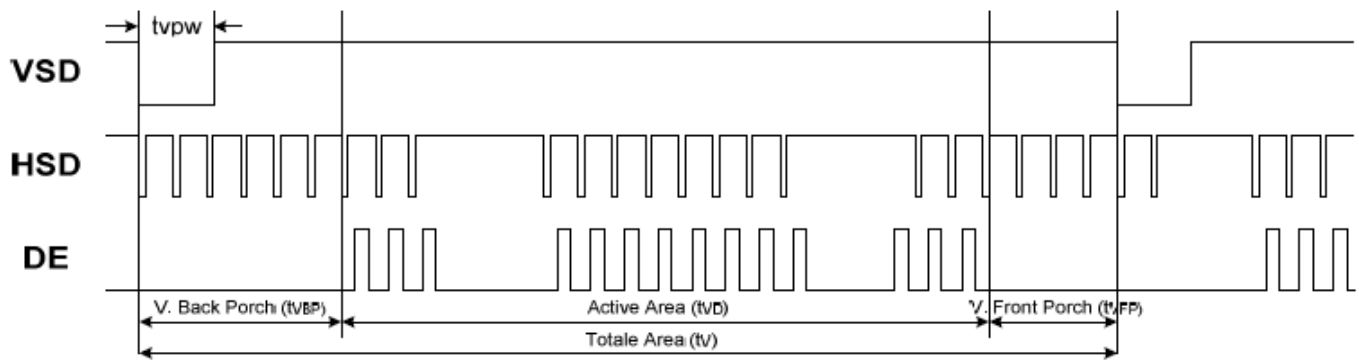
Backlight LED Circuit

6. AC Characteristic

6.1. Display Timing characteristics



Horizontal Input Timing						
Parameter	Symbol	Value			Unit	
		Min.	Typ.	Max.		
Horizontal display area	t _{HD}	--	800	--	CLKIN	
CLKIN frequency	f _{CLK}	--	33.3	50	MHz	
1 Horizontal line period	t _H	862	1056	1200	CLKIN	
HSD pulse width	t _{HPW}	Min.	--	1	CLKIN	
		Typ.	--	--	CLKIN	
		Max.	--	40	CLKIN	
HSD back porch	SYNC	t _{HBP}	46	46	46	CLKIN
HSD front porch	SYNC	t _{HFP}	16	210	354	CLKIN



Vertical Input Timing					
Parameter	Symbol	Value			Unit
		Min.	Typ.	Max.	
Vertical display area	t_{vD}	--	480	--	HSD
VSD period time	t_v	510	525	650	HSD
VSD pulse width	t_{vpw}	1	--	20	HSD
VSD back porch	t_{vBP}	23	23	23	HSD
VSD front porch	t_{vFP}	7	22	147	HSD

7. LCD Module Out-Going Quality Level

7.1 VISUAL & FUNCTION INSPECTION STANDARD

7.1.1 Inspection conditions

Inspection performed under the following conditions is recommended.

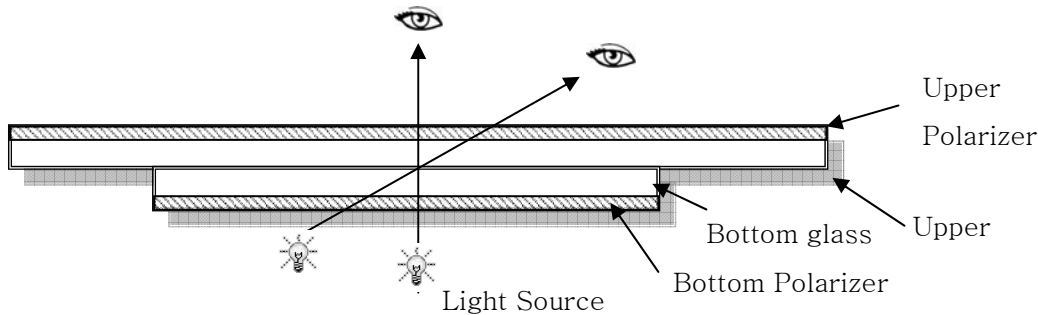
Temperature : $25 \pm 5^\circ\text{C}$

Humidity : $65\% \pm 10\% \text{RH}$

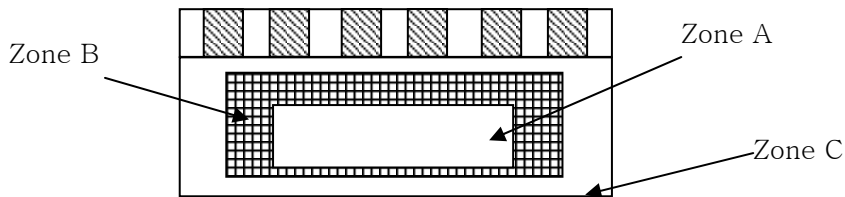
Viewing Angle : Normal viewing Angle.

Illumination: Single fluorescent lamp (300 to 700Lux)

Viewing distance: 30-50cm



7.1.2 Definition



Zone A : Effective Viewing Area(Character or Digit can be seen)

Zone B : Viewing Area except Zone A

Zone C : Outside (Zone A+Zone B) which can not be seen after assembly by customer .)

Note:

As a general rule ,visual defects in Zone C can be ignored when it doesn't effect product function or appearance after assembly by customer.

7.1.3 Sampling Plan

According to GB/T 2828-2003 ; , normal inspection, Class II

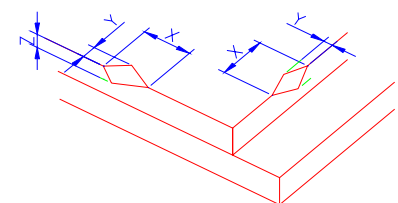
AQL:

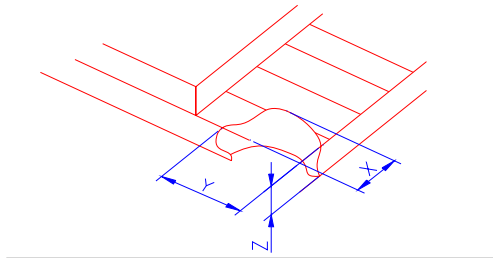
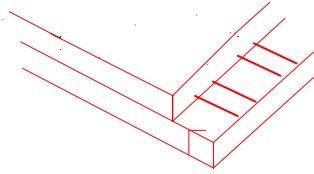
Major defect	Minor defect
0.65	1.5

LCD: Liquid Crystal Display , TP: Touch Panel , LCM: Liquid Crystal Module

No	Items to be inspected	Criteria	Classification of defects
1	Functional defects	1) No display, Open or miss line 2) Display abnormally, Short 3) Backlight no lighting, abnormal lighting. 4) TP no function	Major
2	Missing	Missing component	
3	Outline dimension	Overall outline dimension beyond the drawing is not allowed	
4	Color tone	Color unevenness, refer to limited sample	Minor
5	Soldering appearance	Good soldering , Peeling off is not allowed.	
6	LCD/Polarizer/TP	Black/White spot/line, scratch, crack, etc.	

7.1.4 Criteria (Visual)

Number	Items	Criteria(mm)						
1.0 LCD Crack/Broken	(1) The edge of LCD broken	 <table border="1" data-bbox="845 1635 1388 1814"> <tr> <td>X</td> <td>Y</td> <td>Z</td> </tr> <tr> <td>≤3.0mm</td> <td><Inner border line of the seal</td> <td>≤T</td> </tr> </table>	X	Y	Z	≤3.0mm	<Inner border line of the seal	≤T
X	Y	Z						
≤3.0mm	<Inner border line of the seal	≤T						
NOTE: X: Length Y: Width								

<p>Z: Height L: Length of ITO, T: Height of LCD</p>	<p>(2)LCD corner broken</p>	 <table border="1" data-bbox="919 546 1329 651"> <tr> <td>X</td> <td>Y</td> <td>Z</td> </tr> <tr> <td>≤3.0mm</td> <td>≤L</td> <td>≤T</td> </tr> </table>	X	Y	Z	≤3.0mm	≤L	≤T
	X	Y	Z					
≤3.0mm	≤L	≤T						
<p>(3) LCD crack</p>	 <p>Crack Not allowed</p>							

Number	Items	Criteria (mm)
--------	-------	---------------



2.0 Spot defect

X

$\Phi = (X+Y)/2$

① light dot (LCD/TP/Polarizer black/white spot , light dot, pinhole, dent, stain)

Zone Size (mm)	Acceptable Qty		
	A	B	C
$\Phi \leq 0.10$	Ignore		
$0.10 < \Phi \leq 0.15$	3(distance $\geq 10\text{mm}$)		
$0.15 < \Phi \leq 0.2$	1		
$0.2 < \Phi$	0		

② Dim spot (LCD/TP/Polarizer dim dot, light leakage, dark spot)

Zone Size (mm)	Acceptable Qty		
	A	B	C
$\Phi \leq 0.1$	Ignore		
$0.1 < \Phi \leq 0.2$	2(distance $\geq 10\text{mm}$)		
$0.2 < \Phi \leq 0.3$	1		
$\Phi > 0.3$	0		

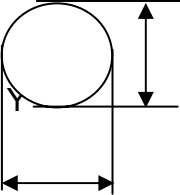
③ Polarizer accidented spot

Zone Size (mm)	Acceptable Qty		
	A	B	C
$\Phi \leq 0.2$	Ignore		
$0.2 < \Phi \leq 0.5$	2(distance $\geq 10\text{mm}$)		
$\Phi > 0.5$	0		

Line defect (LCD/TP /Polarizer black/white line, scratch, stain)

Width(mm)	Length(mm)	Acceptable Qty		
		A	B	C
$\Phi \leq 0.03$	Ignore	Ignore		Ignore
$0.03 < W \leq 0.05$	$L \leq 3.0$	$N \leq 2$		
$0.05 < W \leq 0.08$	$L \leq 2.0$	$N \leq 2$		
$0.08 < W$	Define as spot defect			


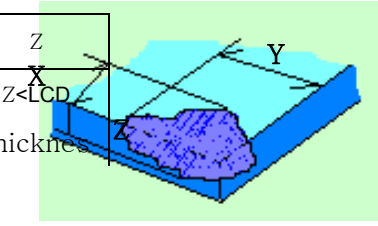
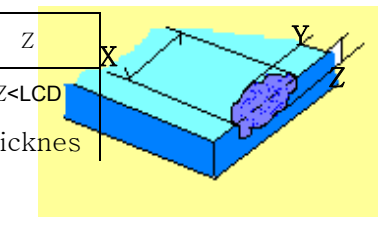


Items	Criteria (mm)																																																									
<p>Spot defect</p>  <p>X</p> <p>Y</p> <p>$\Phi = (X+Y)/2$</p>	<p>① light dot (LCD/TP/Polarizer black/white spot , light dot, pinhole, dent, stain)</p> <table border="1" data-bbox="416 745 1342 1095"> <thead> <tr> <th rowspan="2">Zone Size (mm)</th> <th colspan="3">Acceptable Qty</th> </tr> <tr> <th>A</th> <th>B</th> <th>C</th> </tr> </thead> <tbody> <tr> <td>$\Phi \leq 0.10$</td> <td colspan="2">Ignore</td> <td rowspan="4">Ignore</td> </tr> <tr> <td>$0.10 < \Phi \leq 0.15$</td> <td colspan="2">3(distance $\geq 10\text{mm}$)</td> </tr> <tr> <td>$0.15 < \Phi \leq 0.2$</td> <td colspan="2">1</td> </tr> <tr> <td>$0.2 < \Phi$</td> <td colspan="2">0</td> </tr> </tbody> </table> <p>② Dim spot (LCD/TP/Polarizer dim dot, light leakage、dark spot)</p> <table border="1" data-bbox="416 1189 1369 1547"> <thead> <tr> <th rowspan="2">Zone Size (mm)</th> <th colspan="3">Acceptable Qty</th> </tr> <tr> <th>A</th> <th>B</th> <th>C</th> </tr> </thead> <tbody> <tr> <td>$\Phi \leq 0.1$</td> <td colspan="2">Ignore</td> <td rowspan="4">Ignore</td> </tr> <tr> <td>$0.1 < \Phi \leq 0.2$</td> <td colspan="2">2(distance $\geq 10\text{mm}$)</td> </tr> <tr> <td>$0.2 < \Phi \leq 0.3$</td> <td colspan="2">1</td> </tr> <tr> <td>$\Phi > 0.3$</td> <td colspan="2">0</td> </tr> </tbody> </table> <p>③ Polarizer accidented spot</p> <table border="1" data-bbox="416 1641 1227 1942"> <thead> <tr> <th rowspan="2">Zone Size (mm)</th> <th colspan="3">Acceptable Qty</th> </tr> <tr> <th>A</th> <th>B</th> <th>C</th> </tr> </thead> <tbody> <tr> <td>$\Phi \leq 0.2$</td> <td colspan="2">Ignore</td> <td rowspan="3">Ignore</td> </tr> <tr> <td>$0.2 < \Phi \leq 0.5$</td> <td colspan="2">2(distance $\geq 10\text{mm}$)</td> </tr> <tr> <td>$\Phi > 0.5$</td> <td colspan="2">0</td> </tr> </tbody> </table>	Zone Size (mm)	Acceptable Qty			A	B	C	$\Phi \leq 0.10$	Ignore		Ignore	$0.10 < \Phi \leq 0.15$	3(distance $\geq 10\text{mm}$)		$0.15 < \Phi \leq 0.2$	1		$0.2 < \Phi$	0		Zone Size (mm)	Acceptable Qty			A	B	C	$\Phi \leq 0.1$	Ignore		Ignore	$0.1 < \Phi \leq 0.2$	2(distance $\geq 10\text{mm}$)		$0.2 < \Phi \leq 0.3$	1		$\Phi > 0.3$	0		Zone Size (mm)	Acceptable Qty			A	B	C	$\Phi \leq 0.2$	Ignore		Ignore	$0.2 < \Phi \leq 0.5$	2(distance $\geq 10\text{mm}$)		$\Phi > 0.5$	0	
Zone Size (mm)	Acceptable Qty																																																									
	A	B	C																																																							
$\Phi \leq 0.10$	Ignore		Ignore																																																							
$0.10 < \Phi \leq 0.15$	3(distance $\geq 10\text{mm}$)																																																									
$0.15 < \Phi \leq 0.2$	1																																																									
$0.2 < \Phi$	0																																																									
Zone Size (mm)	Acceptable Qty																																																									
	A	B	C																																																							
$\Phi \leq 0.1$	Ignore		Ignore																																																							
$0.1 < \Phi \leq 0.2$	2(distance $\geq 10\text{mm}$)																																																									
$0.2 < \Phi \leq 0.3$	1																																																									
$\Phi > 0.3$	0																																																									
Zone Size (mm)	Acceptable Qty																																																									
	A	B	C																																																							
$\Phi \leq 0.2$	Ignore		Ignore																																																							
$0.2 < \Phi \leq 0.5$	2(distance $\geq 10\text{mm}$)																																																									
$\Phi > 0.5$	0																																																									



Line defect (LCD/TP /Polarizer black/white line, scratch, stain)	<table border="1"> <thead> <tr> <th rowspan="2">Width(mm)</th> <th rowspan="2">Length(mm)</th> <th colspan="3">Acceptable Qty</th> </tr> <tr> <th>A</th> <th>B</th> <th>C</th> </tr> </thead> <tbody> <tr> <td>$\Phi \leq 0.03$</td> <td>Ignore</td> <td colspan="2">Ignore</td> <td rowspan="3">Ignore</td> </tr> <tr> <td>$0.03 < W \leq 0.05$</td> <td>$L \leq 3.0$</td> <td colspan="2">$N \leq 2$</td> </tr> <tr> <td>$0.05 < W \leq 0.08$</td> <td>$L \leq 2.0$</td> <td colspan="2">$N \leq 2$</td> </tr> <tr> <td>$0.08 < W$</td> <td colspan="3">Define as spot defect</td> <td></td> </tr> </tbody> </table>	Width(mm)	Length(mm)	Acceptable Qty			A	B	C	$\Phi \leq 0.03$	Ignore	Ignore		Ignore	$0.03 < W \leq 0.05$	$L \leq 3.0$	$N \leq 2$		$0.05 < W \leq 0.08$	$L \leq 2.0$	$N \leq 2$		$0.08 < W$	Define as spot defect			
	Width(mm)			Length(mm)	Acceptable Qty																						
A		B	C																								
$\Phi \leq 0.03$	Ignore	Ignore		Ignore																							
$0.03 < W \leq 0.05$	$L \leq 3.0$	$N \leq 2$																									
$0.05 < W \leq 0.08$	$L \leq 2.0$	$N \leq 2$																									
$0.08 < W$	Define as spot defect																										
Polarizer Bubble	<table border="1"> <thead> <tr> <th rowspan="2">Zone Size (mm)</th> <th colspan="3">Acceptable Qty</th> </tr> <tr> <th>A</th> <th>B</th> <th>C</th> </tr> </thead> <tbody> <tr> <td>$\Phi \leq 0.2$</td> <td colspan="2">Ignore</td> <td rowspan="4">Ignore</td> </tr> <tr> <td>$0.2 < \Phi \leq 0.4$</td> <td colspan="2">2 (distance $\geq 10\text{mm}$)</td> </tr> <tr> <td>$0.4 < \Phi \leq 0.6$</td> <td colspan="2">1</td> </tr> <tr> <td>$0.6 < \Phi$</td> <td colspan="2">0</td> </tr> </tbody> </table>	Zone Size (mm)	Acceptable Qty			A	B	C	$\Phi \leq 0.2$	Ignore		Ignore	$0.2 < \Phi \leq 0.4$	2 (distance $\geq 10\text{mm}$)		$0.4 < \Phi \leq 0.6$	1		$0.6 < \Phi$	0							
Zone Size (mm)	Acceptable Qty																										
	A	B	C																								
$\Phi \leq 0.2$	Ignore		Ignore																								
$0.2 < \Phi \leq 0.4$	2 (distance $\geq 10\text{mm}$)																										
$0.4 < \Phi \leq 0.6$	1																										
$0.6 < \Phi$	0																										
SMT	According to IPC-A-610C class II standard . Function defect and missing part are major defect ,the others are minor defect.																										

TP bubble/ accidented spot	<table border="1"> <thead> <tr> <th rowspan="2">Size Φ(mm)</th> <th colspan="3">Acceptable Qty</th> </tr> <tr> <th>A</th> <th>B</th> <th>C</th> </tr> </thead> <tbody> <tr> <td>$\Phi \leq 0.1$</td> <td colspan="2">Ignore</td> <td rowspan="4">Ignore</td> </tr> <tr> <td>$0.1 < \Phi \leq 0.2$</td> <td colspan="2">2 (distance $\geq 10\text{mm}$)</td> </tr> <tr> <td>$0.2 < \Phi \leq 0.3$</td> <td colspan="2">1</td> </tr> <tr> <td>$0.3 < \Phi$</td> <td colspan="2">0</td> </tr> </tbody> </table>	Size Φ (mm)	Acceptable Qty			A	B	C	$\Phi \leq 0.1$	Ignore		Ignore	$0.1 < \Phi \leq 0.2$	2 (distance $\geq 10\text{mm}$)		$0.2 < \Phi \leq 0.3$	1		$0.3 < \Phi$	0	
	Size Φ (mm)		Acceptable Qty																		
A		B	C																		
$\Phi \leq 0.1$	Ignore		Ignore																		
$0.1 < \Phi \leq 0.2$	2 (distance $\geq 10\text{mm}$)																				
$0.2 < \Phi \leq 0.3$	1																				
$0.3 < \Phi$	0																				
Assembly deflection	beyond the edge of backlight $\leq 0.15\text{mm}$																				

5.0	TP Related	Newton Ring	<p>Newton Ring area > 1/3 TP area NG</p> <p>Newton Ring area ≤ 1/3 TP area OK</p>					
		<p>TP corner broken</p> <p>X : length</p> <p>Y : width</p> <p>Z : height</p>	<table border="1" data-bbox="590 1097 890 1254"> <tr> <td>X</td> <td>Y</td> </tr> <tr> <td>$X \leq 3.0\text{mm}$</td> <td>$Y \leq 3.0\text{mm}$</td> </tr> </table> <p>* Circuitry broken is not allowed.</p>	X	Y	$X \leq 3.0\text{mm}$	$Y \leq 3.0\text{mm}$	
X	Y							
$X \leq 3.0\text{mm}$	$Y \leq 3.0\text{mm}$							
		<p>TP edge broken</p> <p>X : length</p> <p>Y : width</p> <p>Z : height</p>	<table border="1" data-bbox="590 1433 890 1590"> <tr> <td>X</td> <td>Y</td> </tr> <tr> <td>$X \leq 6.0\text{mm}$</td> <td>$Y \leq 2.0\text{mm}$</td> </tr> </table> <p>* Circuitry broken is not allowed.</p>	X	Y	$X \leq 6.0\text{mm}$	$Y \leq 2.0\text{mm}$	
X	Y							
$X \leq 6.0\text{mm}$	$Y \leq 2.0\text{mm}$							

Criteria (functional items)

Number	Items	Criteria (mm)
1	No display	Not allowed
2	Missing segment	Not allowed
3	Short	Not allowed
4	Backlight no lighting	Not allowed
5	TP no function	Not allowed

8. Reliability Test Result

8.1 Condition

Item	Condition	Sample Size	Test Result	Note
Low Temperature Operating Life test	-20°C, 96HR	3ea	pass	-
Thermal Humidity Operating Life test	70°C90%RH, 96HR	3ea	pass	-
Temperature Cycle ON/OFF test	-20°C ↔ 70°C, ON/OFF, 20CYC	3ea	pass	(1)
High Temperature Storage test	80°C, 96HR	3ea	pass	-
Low Temperature Storage test	- 30°C, 96HR	3ea	pass	-
Thermal Shock Resistance	The sample should be allowed to stand the following 5 cycles of operation: TSTL for 30 minutes -> normal temperature for 5 minutes -> TSTH for 30 minutes -> normal temperature for 5 minutes, as one cycle, then taking it out and drying it at normal temperature, and allowing it stand for 24 hours	3ea	pass	
Box Drop Test	1 Corner 3 Edges 6 faces, 66cm(MEDIUM BOX)	1box	pass	-

Note (1) ON Time over 10 seconds, OFF Time under 10 seconds

9. Cautions and Handling Precautions

9.1 Handling and Operating the Module

(1) When the module is assembled, it should be attached to the system firmly.

Do not warp or twist the module during assembly work.

(2) Protect the module from physical shock or any force. In addition to damage, this may cause improper operation or damage to the module and back-light unit.

(3) Note that polarizer is very fragile and could be easily damaged. Do not press or scratch the surface.

(4) Do not allow drops of water or chemicals to remain on the display surface.

If you have the droplets for a long time, staining and discoloration may occur.

(5) If the surface of the polarizer is dirty, clean it using some absorbent cotton or soft cloth.

(6) The desirable cleaners are water, IPA (Isopropyl Alcohol) or Hexane.

Do not use ketene type materials (ex. Acetone), Ethyl alcohol, Toluene, Ethyl acid or Methyl chloride. It might permanent damage to the polarizer due to chemical reaction.

(7) If the liquid crystal material leaks from the panel, it should be kept away from the eyes or mouth. In case of contact with hands, legs, or clothes, it must be washed away thoroughly with soap.

(8) Protect the module from static; it may cause damage to the CMOS ICs.

(9) Use finger-stalls with soft gloves in order to keep display clean during the incoming inspection and assembly process.

(10) Do not disassemble the module.

(11) Protection film for polarizer on the module shall be slowly peeled off just before use so that the electrostatic charge can be minimized.

(12) Pins of I/F connector shall not be touched directly with bare hands.

(13) Do not connect, disconnect the module in the "Power ON" condition.

(14) Power supply should always be turned on/off by the item 6.1 Power On Sequence & 6.2 Power Off Sequence

9.2 Storage and Transportation.

(1) Do not leave the panel in high temperature, and high humidity for a long time.

It is highly recommended to store the module with temperature from 0 to 35 °C and relative humidity of less than 70%

(2) Do not store the TFT-LCD module in direct sunlight.

(3) The module shall be stored in a dark place. When storing the modules for a long time, be sure to adopt effective measures for protecting the modules from strong ultraviolet radiation, sunlight, or fluorescent light.

(4) It is recommended that the modules should be stored under a condition where no condensation is allowed. Formation of dewdrops may cause an abnormal operation or a failure of the module.

In particular, the greatest possible care should be taken to prevent any module from being operated where condensation has occurred inside.

(5) This panel has its circuitry FPC on the bottom side and should be handled carefully in order not to be stressed.

Part. No	KD050C-1A-CTP	REV	V1.0	Page 26 of 27
----------	---------------	-----	------	---------------

10.Packing

---TBD-----